

People Profiles



Tracy Mueller
Director of Networking
Wellington Environmental is pleased to announce the addition of Tracy Mueller to our team!

As our new Director of Networking, Tracy will provide ongoing education, outreach, and assistance to general contractors as they navigate the environmental service challenges faced daily in a multitude of industries.



Molly Pryor
EPA Scheduler & Client Liaison Communications Manager
In this roll, Molly will be responsible for improving communication with existing clients and prospects across a wide range of industries.

Prior to joining Wellington Environmental, Molly was an assistant buyer and communication specialist for a military supply firm. She brings with her an extensive background in relationships-building and communication with 140+ vendors, strong data analysis skills, customer service representation, and inventory management.

Molly received her bachelor's degree in political science studies from the University of Missouri in Columbia.



Thom Wellington had the privilege of presenting as the opening speaker at the Utah Society for Healthcare Engineering 2021 Fall Conference in Salt Lake City. The sold-out event drew more than 120 people for Thom's topic, "HAI Reduction After COVID and Tips on Motivating & Educating Others to Improve Outcomes."

Dustless Blasting Paint Booth Grates

Paint booth drainage grates were removed from trenches and taken back to our facility to perform dustless blasting. The grates as shown were clogged with paint. Our dustless blaster quickly removed all the built-up coatings and restored the grates allowing for quicker drainage in the aircraft paint booth.

Dustless blasting can use different media such as; dry-ice, glass, walnuts, sand, and more to provide the best outcome for whatever surface you want rejuvenated. It's fast and less expensive than conventional blasting.

Contact Wellington today for more information on dustless blasting options.



WELLINGTON ENVIRONMENTAL

Your World: Cleaner, Better, Safer

Contact Us:

314-644-4930
Toll Free: 1-866-321-0482
FAX: 314-644-6744

www.environmentalcare.com
info@environmentalcare.com

607 Hanley Industrial Court • St. Louis, MO 63144 USA



WELLINGTON ENVIRONMENTAL

News

Wellington Offers a Wide Range of Services.

Wellington Environmental offers a wide range of services for Cities, General Contractors and Commercial Facilities across the Midwest. We have a large crew of experienced workers trained in many disciplines to help keep your projects moving.



Spray-Applied Fireproofing



General Labor Work



Industrial Vacuum System Removal



Universal Waste from Construction Sites



Underground Storage Tank (UST) Removal



Asbestos Testing and Remediation



Water Testing



Pool & Fountain Coating Removal

Moldy Ducts? We've got the Answers!

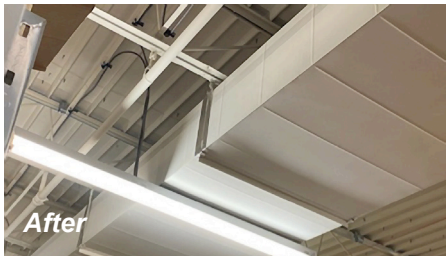
Mold colonized on the exterior of ceiling mounted ductwork over a period of time due to cold air leaking out of the duct and hitting the warmer air at the ceiling. The leaks in the duct were repaired during the disinfecting process.

Before photo shown on left and after photo shown on the right. We also sealed duct seams with professional HVAC tape where needed to prevent leakage.

Discuss your needs with our specialists. Call us at 314-644-4930.



Before



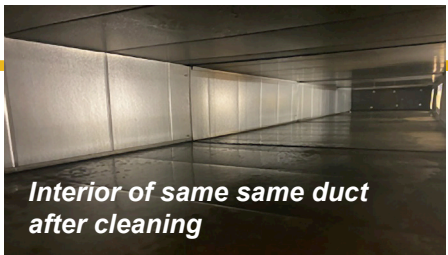
After



Before



After



Interior of same duct after cleaning

HISTORIC PAVILION RESTORATION

St. Louis has a rich history of historical parks and landmarks, many of them on the U.S. National Register of Historic Places. One of these national gems is Tower Grove Park, which sits on 289 acres between Kingshighway Boulevard and Grand Boulevard. Founded on October 20, 1868, Tower Grove Park was a gift from Henry Shaw to the city of St. Louis and is known for its beautiful Victorian style picnic pavilions and lush gardens. It has been designated a National Historic Landmark and is one of the nation’s finest examples of a late 19th-century public park.

Two of the south city park’s more recognized pavilions – The Turkish Pavilion and the Old Playground Pavilion – had been in dire need of restoration. But to tackle the specialized job would require the expertise of Wellington Environmental, which has over 30 years of experience in environmental testing and remediation services. Vanstar Construction & Navigate Building Solutions coordinated the entire project with specialized trades assigned to the restoration process.

Wellington Environmental’s expertise with similar historic structures was utilized to remove damaged, delaminated paint and rotted wood conditions. The company’s multi-disciplined environmental certified workers were also tasked with cleaning the entire structure with EPA registered products.

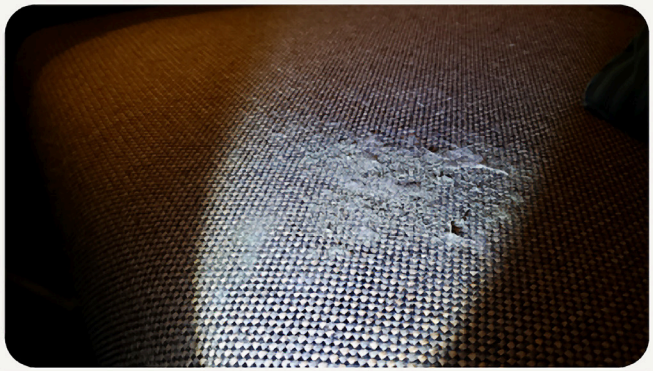


Austin Doss, MS Env. Eng.,
Engineering Solutions Manager for Wellington Environmental, led the environmental portion of the restoration process. According to Doss, “this project provided us with an opportunity to showcase our skills as well as help enhance the beauty of these historic structures.”

Published November 09, 2021 by Construction Forum St. Louis



UNIQUE SOLUTION SAVES \$750,000 FOR MAJOR HOTEL



After Discovering a Mechanical Failure During the COVID-19 Crisis That Caused Elevated Humidity and Mold Levels, a Major Hotel Turned to Engineers and Technical Specialists at Wellington Environmental to Develop a Solution. The Hotel Wanted Options on Remediation that would be Backed with Scientific Data to Provide Reliability and Safety Assurance for High-End Hotel Customer Usage.



The Approach

Under the guidance and direct supervision of Thom Wellington, the team’s initial research included inspecting and testing over 350 rooms. Once the data was compiled it was used to put room conditions into three (3) different categories. The categories were determined based on total spore counts, specific mold species, and visual conditions.

A remediation plan was developed for all three classifications. The goal of the overall plan was based on the four (4) pillars of acceptance:

- Room must be documented safe and clean beyond normal levels before returning to service
- The hotel must remain operational (using rooms that had no issues and determined to be clean) with no disturbance to customers
- All categories of rooms are to be disinfected for COVID viruses using an EPA N Listed disinfectant no matter what category they fall into as an added safety measure
- Worst ranking rooms required special treatments and actions that included longer air exchanges, AHU disinfecting, coil cleaning, fogging, drapery and carpet cleaning, plus disinfecting all surfaces including walls and ceilings.

The Solution

The steps outlined were used in conjunction with testing to determine if carpet removal and other demolition was necessary to achieve the plan’s goals.

The entire process took months to complete. With lower occupancy demand due to COVID and with rooms moved back into service during the process –the plan was acceptable to hotel operations.

While restoration firms wanted to immediately strip the rooms and start over, the Wellington Environmental solution offered the following benefits:

- Hotel remained open with no major construction/demolition disturbance
- Furnishings were effectively cleaned and disinfected, preventing replacement or warehousing expense with other plans
- The specialized cleaning and disinfecting prevented costly replacement of drapery and carpeting

The Costs Savings Realized were Greater than \$750,000 and The Hotel Remained Open, Resulting in Additional Levels of Revenue and Maintaining Employment of Critical Staff.