

## People Profiles



**Patrick Harper**  
Vice President,  
Global Growth

As vice president of global growth, Harper continues extensive environmental planning and remediation for hospitals, research facilities, commercial office buildings and industrial customers. Harper is a graduate of Miami University and presided over an industrial waste handling firm prior to joining Wellington.



**Austin Doss**  
Vice President of Engineering  
& Remediation

Responsible for estimating, engineering and planning large projects for industrial and institutional clients throughout the Midwest. Doss earned his master's degree in environmental engineering from Missouri University of Science and Technology and holds multiple environmental licenses.



**Cindy Kahmke**  
Office Administrator

Cindy has experience as both a licensed realtor and a financial services coordinator. Her experience helps both residential and commercial real estate clients with environmental concerns. Cindy schedules estimators, environmental notifications, and coordinates with operations on scheduling..



**John Slattery,**  
Chief Financial Officer

John joined the company in 2024 in a new role as a fractional CFO. Slattery brings decades of experience from construction related industry. His new role is to help accelerating growth.



Radio Show Host Larry Connors, News Talk STL has been telling our story to audiences for more than 6 years.

### Giving Back

Giving back to the people and communities we serve is not lost, we are thankful for the success we have experienced. Team Members devoted an entire day and evening to ring the bell for the Salvation Army during the Christmas season.



### Special Requirement: Protect Students and Work from the Outside

This school project required special safety measures to keep the work area safe and to allow for the performance of the work to be 100% outside the building. Austin Doss, VP of Engineering jumped in and designed a containment, prefabricated it at our warehouse, and even cut the lumber. The benefit: workers could quickly erect the barriers at the site and avoid unnecessary debris at the school.



### Surprises Aren't Always Costly

When you have the right team, surprises that occur on job sites can be remedied quickly and without unnecessary mobilization and equipment costs.

A small heating storage tank was discovered on site for an existing client on a strict deadline. Wellington Environmental mobilized to initially sample the materials left in the tank. We then returned to extract, clean and post sample all remaining soil to confirm no contamination was left in the excavation. This surprise was all completed ahead of schedule to allow no down time between other trades mobilizing to keep their schedule. All materials were properly disposed of with regulated manifests to present to the client for a CLEAN site report from this tank.



**WELLINGTON  
ENVIRONMENTAL**

Your World. Cleaner, Better, Safer

### Contact Us:

314-644-4930

Toll Free: 1-866-321-0482

FAX: 314-644-6744

www.wellingtonstl.com  
info@wellingtonstl.com

607 Hanley Industrial Court • St. Louis, MO 63144 USA



WELLINGTON  
ENVIRONMENTAL

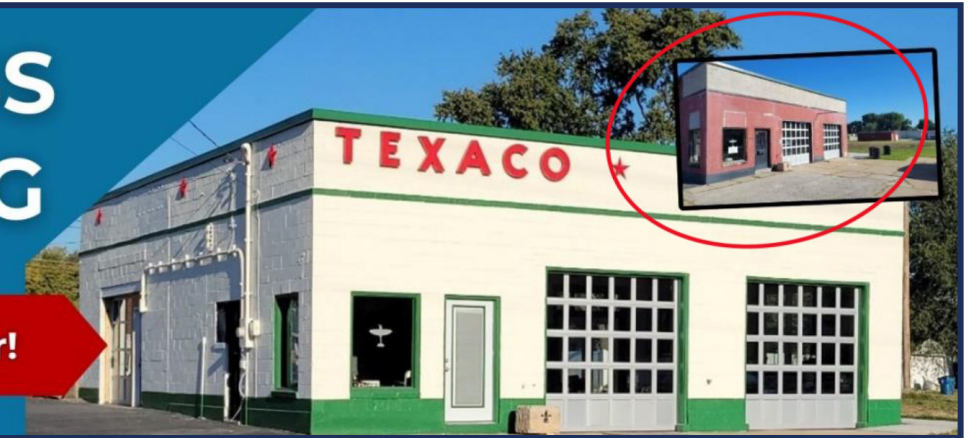
# News

## SPECIAL NEED: Reviving Historic TEXACO Station To Life.

### DUSTLESS BLASTING



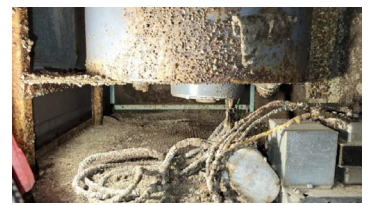
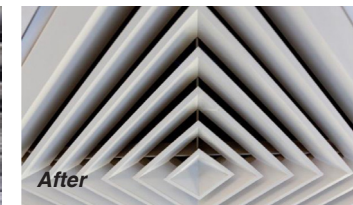
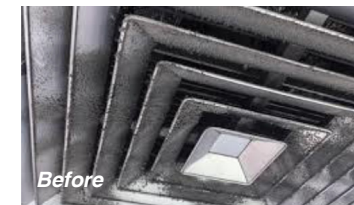
Before & After!



Our advanced blasting equipment allows for surface preparation on the most difficult of surfaces. Shown above is the historic renovation to a Texaco station in St. Charles, Missouri. Our dustless blasting equipment

and glass beads provided the right force to remove all of the old paint coating from the building so that it could be properly restored and painted as part of planned outdoor entertainment campus.

## Mold: Supply Air Diffusers.



At least once a month we have crews working in commercial buildings cleaning and disinfecting mold and dirt on air vents. Our protocol includes removing the supply and return diffusers, HEPA vacuuming the inside of the ductwork, cleaning/disinfecting the diffusers and grates while removed. This protocol ensures a thorough cleaning process. At times we also use a safe degreaser and paint to fully restore the vent.

### What is the Cause of the Mold on these vents?

Many of the black spots are caused by condensation occurring as colder air leaves the ductwork and hits

warmer air at ceilings. This slight condensation provides just enough moisture for dirt to collect and mold to colonize.

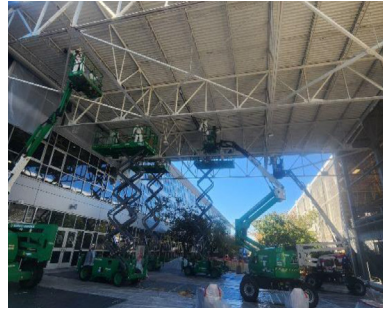
### MOLD inside Air Handling Units

Hot humid air entering the fan unit can allow mold to colonize on fans, impellers, wires, and the interior of enclosures. It is best to check your air handling units in the summer and fall to determine if cleaning and disinfecting is needed.

## Can you count how many Lifts we used on this project?

This project required a large crew to remove lead containing paint on a weekend so that employees and customers would not be exposed at this entranceway during the week. Painters mobilized afterwards to provide a new protective coating to the steel deck and trusses.

Answer: 6



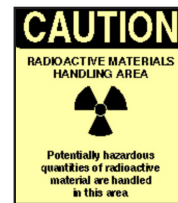
## Invasive Procedure Room Testing for Hospitals

For decades, Wellington Environmental has been testing and providing certification for Operating Rooms across the Midwest. We are one of the few testing companies that provides specialized environmental testing in invasive procedure rooms for Hospitals and Ambulatory Surgery Centers. Our 8-point testing protocol provides the necessary information to determine if the environment in critical spaces is safe for patient procedures. ASC's and hospitals also use our testing to annually certify invasive procedure rooms as part of the accreditation process.



## Special Need: RAD Work

Our HAZMAT team received specialized Radioactive Material Training to aid in performing specialized work in a facility preparing for demolition. Besides our special training we are also rated as a safe provider with an A rating by a national risk-reduction program.



## Plant Cleaning for FDA Inspections, Fire Safety, and Foreign Object Debris



Experienced technicians have the right equipment to perform industrial plant cleaning that satisfies the most rigorous requirements. Special vacuums, food-grade blasting, power washers, and degreasing are just some of the tools used to clean your facility's toughest spots.

Our crews provided cleaning for food additive plants, aerospace facilities, pharmaceutical manufacturers, and dairy processing facilities just in the last 12 months.

## Fireproofing is Big Business for Wellington (Patching Specialists too!)



Many contractors don't know us as a certified Carbolite® fireproofing installer. But its true and we have over 25 years of experience in providing fireproofing services. Whether it's application to new steel, or patching areas during renovations, Wellington is your solution for applied fireproofing needs.

## University Dorm Fireproofing Project

"We used Wellington for fireproofing on a school dorm project and were blown away by how clean they left the construction site."

Tom, Superintendent St. Louis GC

## Surgery Center Fireproofing Patching

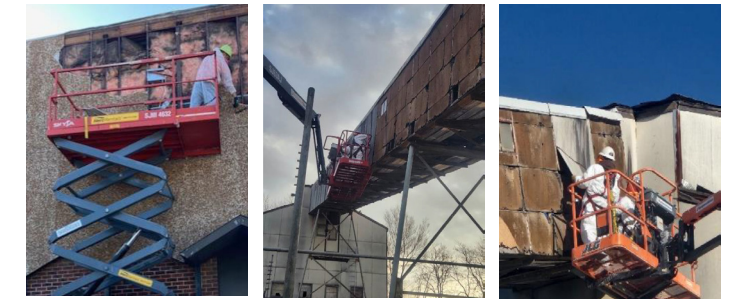
We touched up fireproofing for a surgery center in Creve Coeur and had no issues with the Fire Marshal. The GC was happy, and the project finished on time.



## Largest in Midwest = Safer, Faster, Less Expensive

Wellington Environmental is the largest attic vermiculite removal company in the Midwest. Our specialized vacuum system sits outside the home, no one is hauling bags of vermiculite through your home. We also have the equipment and skill to reinsulate the attic once the vermiculite is removed providing an increased R Value and energy savings.

As one of the nation's largest vermiculite experts, we know how to help customers process the needed sampling and paperwork to aid in qualifying for the Zonolite Attic Insulation Trust Fund. Pat Harper is the person to call in our office to guide you through the process.



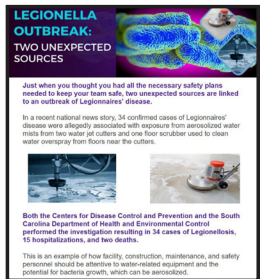
## Up, Up and Away: High work is not unusual for our team

As an industrial contractor, we are often called to perform work in high places. Our crews have OSHA lift training to keep people and jobs safe.

Experience with heights means crews are not wasting time and guessing at equipment for access. Recently we used 115' lifts to remove transite panels at a concrete production plant that needed to upgrade the product conveyor system.

## Water Management Plans and Water Testing

Our technicians collect more than 250 Legionella water samples annually. Our volume allows us to have special rates with the large laboratories, providing great pricing with an experienced team.



## Problem: Water Treatment Plant Basin Leaking

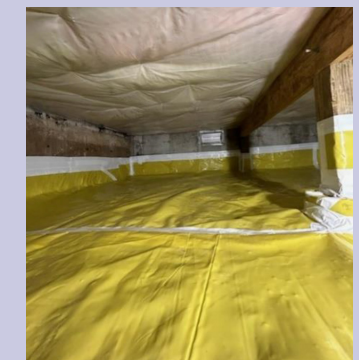
When the original coating failed in a concrete water treatment tank, we responded with our Dustless Blasting equipment. Workers blasted the old coating from the tank walls and floors to prepare for the installation of a new rubber liner.



## Problem: Elevator Sump Pump Fails

Elevator pits can sometimes fill with water or hydraulic fluid. In this case, the sump pump failed and water mixed with oils quickly filled the pit. Our team pumped the liquids to drums, power washed and cleaned the pit, so maintenance could replace the failing pump. Liquid waste was sampled, categorized as non-hazardous, transported and properly disposed.

## NEW Product- 15 mil Yellow Crawl Space Liner



Crawl spaces can create MOLD related issues due to water and moisture. Wellington has been installing crawl space liners for decades. Recently we added a new 15 mil thick yellow liner that protects the space and makes it easier for future crawl space maintenance activities.